

GE Consumer & Industrial  
Electrical Distribution

# Built-in features Built-in simplicity Built for small motor control

AF-60 LP™ Micro Drives



imagination at work

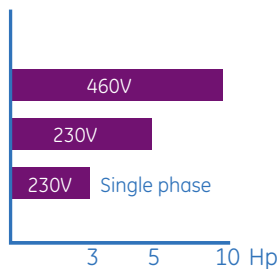
# AF-60 LP™ Micro Drives Built for small motor control



The AF-60 LP is built right for all those variable frequency applications requiring macro performance from a micro drive.

- Fans
- Pumps
- Mixers
- Conveyors
- Material handling
- Industrial machinery, including: agitators, lathes, spinning machines, machine tools, packaging equipment, plastics and woodworking

Micro AF-60 LP™



## Ready to go, right from the start

- Self protecting features
- 150% current overload up to 1 minute
- Flying start (catch a spinning motor)
- Precise stop function
- Electronic thermal overload
- Easy to use PC software
- Potentiometer on each keypad
- Keypad is hot pluggable and can be password protected

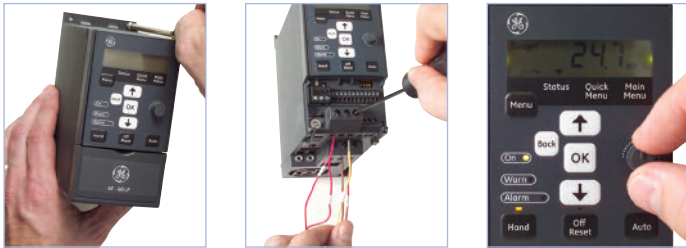
## Built-in durability

- Robust housing (IP20) protects the drive and allows side-by-side mounting with no de-rating\*
- Conformal coated circuit boards and high quality capacitors maximize uptime
- Intelligent heat management leads to long life
- RoHS & WEEE compliance makes for environmental responsibility
- Standards: CE, UL, cUL, C-Tick

\*Side-by-side mounting not compatible with optional IP21/NEMA 1 Field Installable Kit

## AF-60 LP™ Micro Drives

# Built-in simplicity speeds installation and set-up



Right out of the box, the AF-60 LP makes installation and set-up a snap. Right *on* the box is printed the wiring diagram and template. And right *in* the box you'll find the Quick Guide. An optional DIN rail mounting kit is available for drives up to and including 3HP.

The removable keypad is your window into all programming and information elements.



In most cases, start-up can be completed in less than 5 minutes, saving you valuable time.

You can set up one drive and then copy settings to other drives using the hot pluggable feature, eliminating the need for duplicate programming.

The Quick Menu provides easy access to all the basic settings and the controller.

- Hot pluggable
- Illuminated LCD display
- Parameters & their values
- Unit indications
- Rotation direction indication
- Set-up indication



Actual size

# AF-60 LP™ Micro Drives

## Ratings, dimensions and specifications

Input (50/60 Hz)	HP	kW	Amps	Dimensions (in)			Weight (lbs)	Model No.
				H	W	D		
230Vac, 1-Phase	1/4	0.18	1.2	6.13	2.76	6.06	2.43	6KLP21F25X9A1
	1/2	0.37	2.2	6.13	2.76	6.06	2.43	6KLP21F50X9A1
	1	0.75	4.2	6.13	2.76	6.06	2.43	6KLP21001X9A1
	2	1.5	6.8	7.09	2.95	6.85	3.53	6KLP21002X9A1
	3	2.2	9.6	9.69	3.54	8.07	9.70	6KLP21003X9A1
230Vac, 3-Phase	1/3	0.25	1.5	6.13	2.76	6.06	2.43	6KLP23F33X9A1
	1/2	0.37	2.2	6.13	2.76	6.06	2.43	6KLP23F50X9A1
	1	0.75	4.2	6.13	2.76	6.06	2.43	6KLP23001X9A1
	2	1.5	6.8	7.09	2.95	6.85	3.53	6KLP23002X9A1
	3	2.2	9.6	9.69	3.54	8.07	9.70	6KLP23003X9A1
	5	3.7	15.2	9.69	3.54	8.07	9.70	6KLP23005X9A1
460Vac, 3-Phase	1/2	0.37	1.2	6.13	2.76	6.06	2.43	6KLP43F50X9A1
	1	0.75	2.2	6.13	2.76	6.06	2.43	6KLP43001X9A1
	2	1.5	3.7	7.09	2.95	6.85	3.53	6KLP43002X9A1
	3	2.2	5.3	7.09	2.95	6.85	3.53	6KLP43003X9A1
	5	3.7	9	9.69	3.54	8.07	9.70	6KLP43005X9A1
	7 1/2	5.5	12	9.69	3.54	8.07	9.70	6KLP43007X9A1
	10	7.5	15.5	9.69	3.54	8.07	9.70	6KLP43010X9A1

<b>Digital Inputs</b>	5 Programmable Logic Voltage Level Input Resistance	PNP or NPN 0-24Vdc 4K ohm
<b>Digital Outputs</b>	2 Programmable Max Load Voltage Max Load Voltage	200mA 24Vdc 25mA 10.5Vdc (+/- 0.5V)
<b>Analog Input</b>	1 Programmable Voltage Level Input Resistance Current Level Input Resistance	0-10Vdc 10K ohm 0/4-20mA 200 ohm
<b>Analog Output</b>	1 Programmable Max Load to Common Current Level Accuracy Resolution	500 ohm 0/4-20mA 0.8% of Full Scale 8-bit
<b>Relay Output</b>	1 Programmable AC Rating DC Rating	250Vac, 0.2-2 amps 24-30Vdc, 0.1-2 amps
<b>Serial Communications</b>	Type RS-485	
<b>Environmental</b>	Enclosure Vibration Relative Humidity Ambient Temp Storage Temp Altitude	IP20 (IP21/NEMA 1 Kits Available) 1.0g 5-95% Non-Condensing Max 122°F (50°C) -13°F (-25°C) to 149°F (65°C) 3280 feet (without derating), 9842 feet (with derating)
<b>International Standards</b>	UL, cUL, CE, RoHS, WEEE, C-Tick	
<b>Accessories</b>	Remote mounting kit for keypad Replacement keypads with 10ft cable DIN rail mounting kit for 3HP and below NEMA 1 kit that allow drives to meet NEMA type 1 requirements De-coupling plate kit for EMC applications	

GE Consumer & Industrial  
41 Woodford Avenue  
Plainville, CT 06062

Information provided is subject to change without notice. Please verify all details with GE. All values are design or typical values when measured under laboratory conditions, and GE makes no warranty or guarantee, express or implied, that such performance will be obtained under end-use conditions.

[www.geelectrical.com/drives](http://www.geelectrical.com/drives)



imagination at work